

PinLine™, Vector™ & MicroLine™

www.interface.com

United States Headquarters

1503 Orchard Hill Road
LaGrange, GA 30240
1.800.336.0225 ext. 6511

Canadian Headquarters

233 Lahr Drive
Belleville, ON K8N 5S2
1.800.267.2149 ext. 2128

Latin American Headquarters

Rua Surubim, 577 - Conjuntos
73/74 7º Andar
04571-050 - São Paulo - SP
+ 55 11 2196 0900

CIM # IFS00595 02/2013



Mission Zero:
our promise to eliminate any
negative impact our company
may have on the environment
by the year 2020.

Interface®

Pin Line™, Vector™ & Micro Line™

Three different lines. One point: Less is more (again) and looking good. We've learned the hard lesson in recent years of how to do a whole lot more with a lot less. But nowhere was it written that we had to sacrifice good design in the process. Especially in business interiors, we need materials that delineate this point—eliminate excess and underline style and performance. Pin Line, Vector and Micro Line match all the bright ideas and promise that you've invested in your business with equal amounts of finish and confidence, each made with only the essential materials in truly reliable constructions. Pin Line is a discreet looped finish that's highlighted by an accent that is perfectly scaled for the office. Micro Line is a bit edgier with its flat-woven texture that feels current and looks sharp. And Vector's classic monolithic texture provides a great companion for both. Get the point?



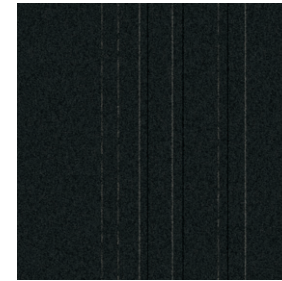




Pin Line™ Colorline



103533 BARK



103534 CHARCOAL



103535 STRAW



103536 GRANITE



103537 FLAX



103538 STONE



103539 SAGE



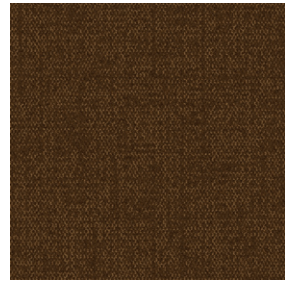
103540 ASH

Specifications

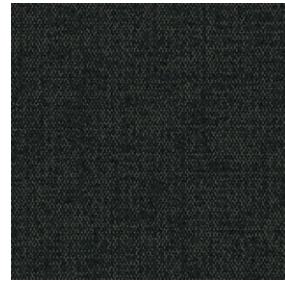
Modular, 50 cm x 50 cm	1386602500
Backing System	GlasBac® Tile
Yarn Manufacturer	Aquafil
Yarn System	100% Recycled Content Type 6 Nylon
Color System	100% Solution Dyed
Construction	Tufted Textured Loop
Lifetime Antimicrobial	Intersept®
Soil/Stain Protection	Protekt®
Pile Thickness	0.078 in., 2.0 mm
Pile Density	6,923
Total Recycled Content	58%
Indoor Air Quality	CRI Green Label Plus #GLP0820



Vector™ Colorline



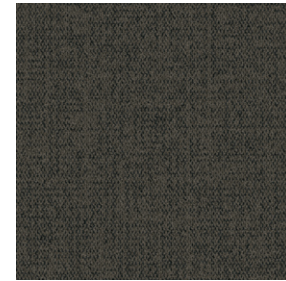
103525 BARK



103526 CHARCOAL



103527 STRAW



103528 GRANITE



103529 FLAX



103530 STONE



103531 SAGE



103532 ASH

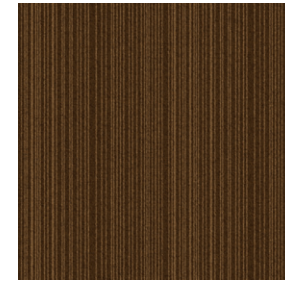
Specifications

Modular, 50 cm x 50 cm	1386502500
Backing System	GlasBac® Tile
Yarn Manufacturer	Aquafil
Yarn System	100% Recycled Content Type 6 Nylon
Color System	100% Solution Dyed
Construction	Tufted Textured Loop
Lifetime Antimicrobial	Intersept®
Soil/Stain Protection	Protekt ² ®
Pile Thickness	0.104 in., 2.6 mm
Pile Density	4,846
Total Recycled Content	58%
Indoor Air Quality	CRI Green Label Plus #GLP0820

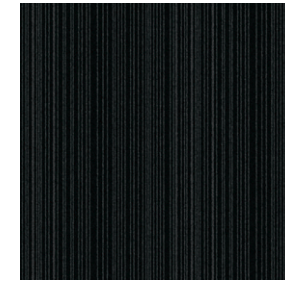


MONOLITHIC QUARTER-TURN

Micro Line™ Colorline



103711 BARK



103712 CHARCOAL



103713 STRAW



103714 GRANITE



103715 FLAX



103716 STONE



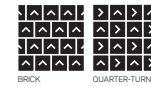
103717 SAGE



103718 ASH

Specifications

Modular, 50 cm x 50 cm	1022U02500
Backing System	GlasBac® Tile
Yarn Manufacturer	Aquafil
Yarn System	100% Recycled Content Type 6 Nylon
Color System	100% Solution Dyed
Construction	Tufted Cut Pile
Lifetime Antimicrobial	Intersept®
Soil/Stain Protection	Protekt ² ®
Pile Thickness	0.030 in., 0.8 mm
Pile Density	13,200
Total Recycled Content	60%
Indoor Air Quality	CRI Green Label Plus #GLP0820



BRICK QUARTER-TURN

Why Our Modular Carpet?



Modular Carpet Tile

Performance and Flexibility. Interface's standard backing systems set the industry standard for modular performance. Tiles stay on the floor with no upcurl, no tapping and no rippling effect, yet are easy to selectively replace. Our modular carpet is also easier to handle, install and maintain than bulky roll carpet. And, it installs with less waste so you save time and money — 3-4% for typical modular carpet compared to an average waste factor of 14% for traditional roll carpet.

Samples

Order samples at www.interface.com. You'll receive email order confirmations, 24/7 access to order status and more. Not near a computer? You can also request samples by calling one of the numbers below.

United States 1.877.605.1500 Canada 1.866.398.3192

Brazil + 55 11 2196 0902 Latin America + 55 11 2196 0900



Cool Carpet™

Help Stop Global Warming and Earn a LEED® Innovation Credit. ALL Interface modular carpet sold in North America is third party verified climate neutral Cool Carpet. Cool Carpet zeros out all greenhouse gas (GHG) emissions associated with the entire lifecycle of your carpet. And climate neutral verified Cool Carpet may be eligible for a USGBC or CaGBC LEED Innovation Credit.

www.interface.com

Register at www.interface.com to:

- Order samples
- View carpet in a variety of room scenes and even upload your own room
- Use our LEED Calculator
- Check order status and inventory availability
- Sign up to get the latest information on Interface products and news



TacTiles®

No Glue Installation. Our revolutionary TacTiles installation system eliminates the need for glue, adhering tiles securely together to form a floor that “floats” for greater flexibility, easier replacement and long-term performance. The result? Less mess, less waste and virtually no VOCs, not to mention an environmental footprint that is over 90% lower than that of traditional glue adhesives.

InterCircle™ Sample Return

Help us close the loop on the carpet sampling process. Through our InterCircle Sample Return program, sample materials stay out of the landfill and are re-used as samples until it is time to recycle them into new carpet. By reducing sample production material and diverting old materials from the landfill, we can reduce our overall environmental footprint.

Call 1 877 605 1500 (U.S.) or 1 866 398 3192 (Canada) to order a sample return bag with a prepaid return label.



Intersept®

Mold Protection. Our proprietary antimicrobial preservative, Intersept, protects our modular carpet against mold growth and odor-causing bacteria — guaranteed. Intersept treated carpet, with proper maintenance, shows no mold or bacterial growth when tested per the ASTM E2471 Standard Test Method. Intersept is low in toxicity, water insoluble and contains no arsenic, heavy metals, phenols or formaldehyde.



ReEntry® 2.0

Recyclable is Now a Reality. Our ReEntry 2.0 program uses innovative technology that gives us the ability to cleanly separate the face fiber and backing of nearly any carpet type. Separated Type 6 and 6,6 nylon are recycled into new 6 and 6,6 nylon, while separated GlasBac® and similar competitor backings are recycled into new GlasBac®RE non-virgin PVC backing using our Cool Blue™ technology. The result? Products with up to 81% total recycled content, including as much as 35% post-consumer content.



Sustainable Choice

Environmental Responsibility. Interface was the industry's first to earn an EPD (Environmental Product Declaration), which evaluates consistent factors based on full lifecycle assessment (LCA). We achieved an EPD based on our Convert™ products and have now expanded our EPDs into four categories covering more than 90% of our products.

In addition, all Interface products with GlasBacRE backing meet the Platinum level of the NSF/ANSI 140 Sustainable Assessment for Carpet. GlasBac or NexStep® backed products meet the Gold level. All contribute toward a USGBC or CaGBC LEED Innovation Credit.

Third Party Certification



Cool Carpet – Our third party verified carbon offset program zeroes out all greenhouse gas (GHG) emissions associated with the entire lifecycle of your carpet.



Environmental Product Declaration (EPD) – A statement of product ingredients and environmental impacts over the entire life cycle of a product. A comprehensive life cycle assessment (LCA) is performed to ISO standards to develop an EPD, after which both the EPD and LCA must be third party verified.



Sustainable Assessment for Carpet – The only carpet sustainability standard in North America that evaluates the environmental impact of carpet for its entire lifecycle.



CRI Green Label Plus – An independent testing program that identifies carpet and adhesives with very low emissions of VOCs to help improve indoor air quality.

Production specifications are subject to normal manufacturing tolerances and may be changed without notice. Slight variation in color among different production lots are normal and should be considered in the overall installation plan. Products covered by manufacturer's written warranty only. All other warranties, including without limitation any implied warranties of merchantability or fitness for particular purpose, are hereby disclaimed. Contact your representative for written warranty information. Recycled content calculations are based on historical averages by total weight of the product. We update our recycled content information and other environmental data regularly to reflect changes and advancements in our technology. Post-consumer content comes from reclaimed carpet.



RECYCLED
Paper made from recycled material
FSC® C009723



PLEASE RECYCLE

Printed on 50% post consumer waste (PCW) fiber manufactured using wind power.

We have tried our very best to accurately represent product colors. However, due to the nature of printed materials, color of actual products may vary slightly. Please request a sample to see actual product color.